

N Type TOPCon

Mono half-cut module



Has a life cycle of at least thirty years
Additional power generation is
about 10%-30% higher than
conventional modules



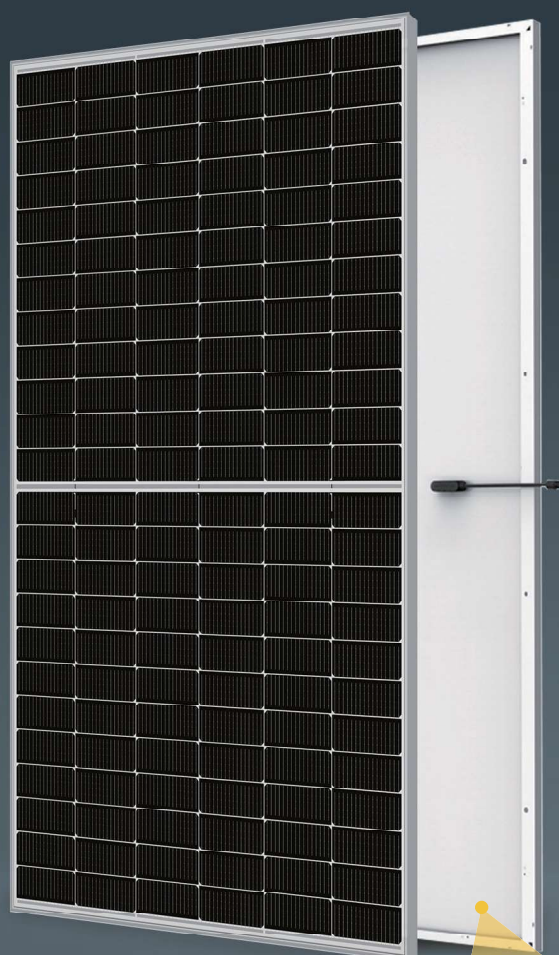
Lower cost per kilowatt-hour
Reduce the overall BOS of PV systems



Compared with conventional modules,
it has higher power output under low light
conditions such as haze and cloudy days

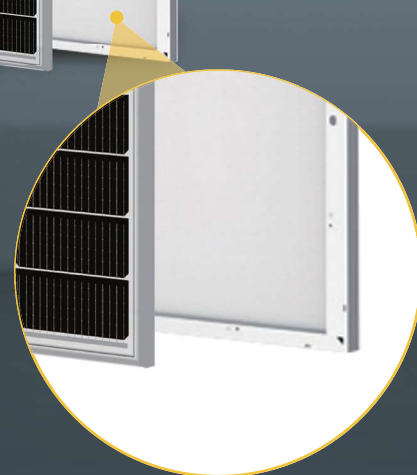


Anti-PID (potential induced decay)
by TUV North German
industry standard



580W

182*91mm



Ningbo Osda Solar Co., Ltd.

Tel: 400-1009967

Email: sales@osdasol.com

Website: www.osdasol.com.cn

Ningbo Osda New Energy Production Base: No. 128 Haichuan Road, Jiangbei District, Ningbo, Zhejiang Province

Shandong Osda New Energy Production Base: Zhengwang Town, Hedong District, Linyi City, Shandong Province

Yiwu Osda New Energy Production Base: No. 126 Su Fu Road, Su Xi Town, Yiwu City, Zhejiang Province

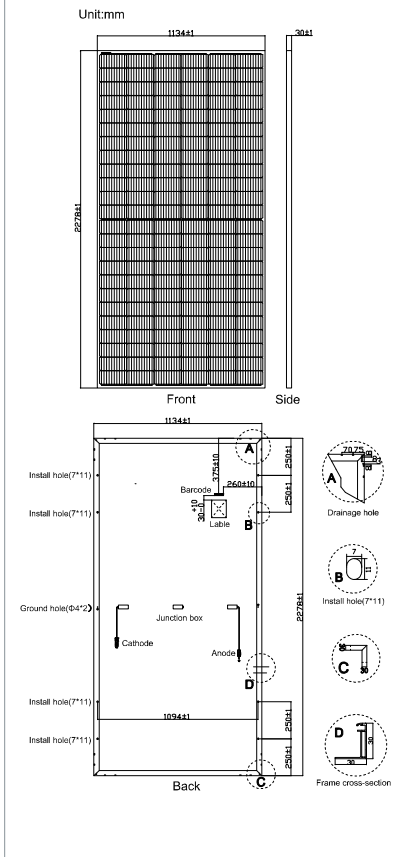


Official website



Official public account

PV DRAWINGS



ELECTRICAL DATA (STC)

Model Type	ODA580-36V-MH
Peak Power (Pmax)	580.00
Maximum Power Voltage (Vmp)	42.37
Maximum Power Current (Imp)	13.69
Open Circuit Voltage (Voc)	51.06±3%
Short Circuit Current (Isc)	14.46±3%
Module Efficiency (%)	22.50

© *STC: irradiance 1000W/m², AM1.5, and cell temperature of 25°C

ELLCERICAL DATA (NOCT)

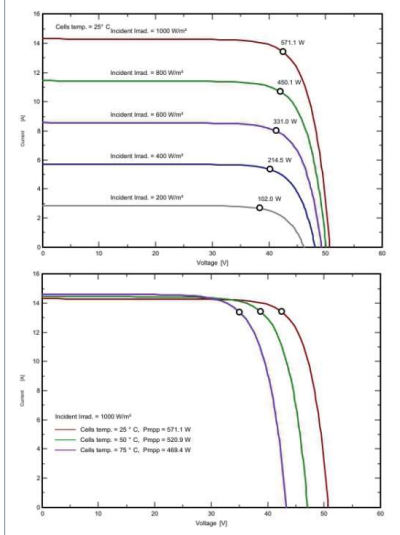
Model Type	ODA580-36V-MH
Peak Power (Pmax)	436.00
Maximum Power Voltage (Vmp)	39.69
Maximum Power Current (Imp)	10.99
Open Circuit Voltage (Voc)	48.44±3%
Short Circuit Current (Isc)	11.69±3%

© *NOCT: irradiance 800W/m², AM1.5, ambient temperature 20°C, wind speed 1m/s

TEMPERATURE&MAXIMUM RATING

Maximum System Voltage (V)	1500V
Maximum Series Fuse Rating (A)	25A
Power Tolerance	0~+3W
Pmax Temperature Coefficients (W/°C)	-0.300%/°C
Voc Temperature Coefficients (V/°C)	-0.250%/°C
Isc Temperature Coefficients (A/°C)	+0.046%/°C
NOCT Nominal Operating Cell Temperature (°C)	45±2
Operating and Storage Temperature (°C)	-40~+85

IV CURVE



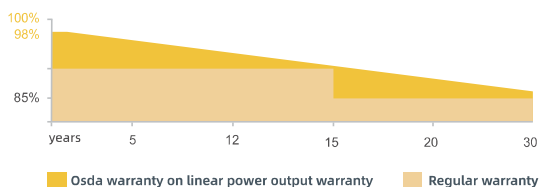
MECHANICAL CHARACTERISTICS

Cell Type	182*91 (TOPCon Mono)
No. of Cells	144 (12*12)
Dimensions (mm)	2278*1134*30
Weight (Kg)	28.40
Front Glass (mm)	3.2mm high transmission, low iron, tempered glass
Frame	Anodized Aluminium Alloy
Junction box	IP67/IP68 3diodes
Output cables	4mm ² cable 35cm (Including MC4 connector)
MaxWind Load/Snow Load	2400Pa/5400Pa

PACKING WAY

20FT container	5Packages/185pcs
40HQ container	20Packages/740pcs

WARRANTY



15
YEAR

Guarantee on product materail and workmanship

30
YEAR

Linear Power output warranty